

**GEOPARQUE MUNDIAL**  
• COMARCA MINERA •  
GEOPARQUE INFANTIL

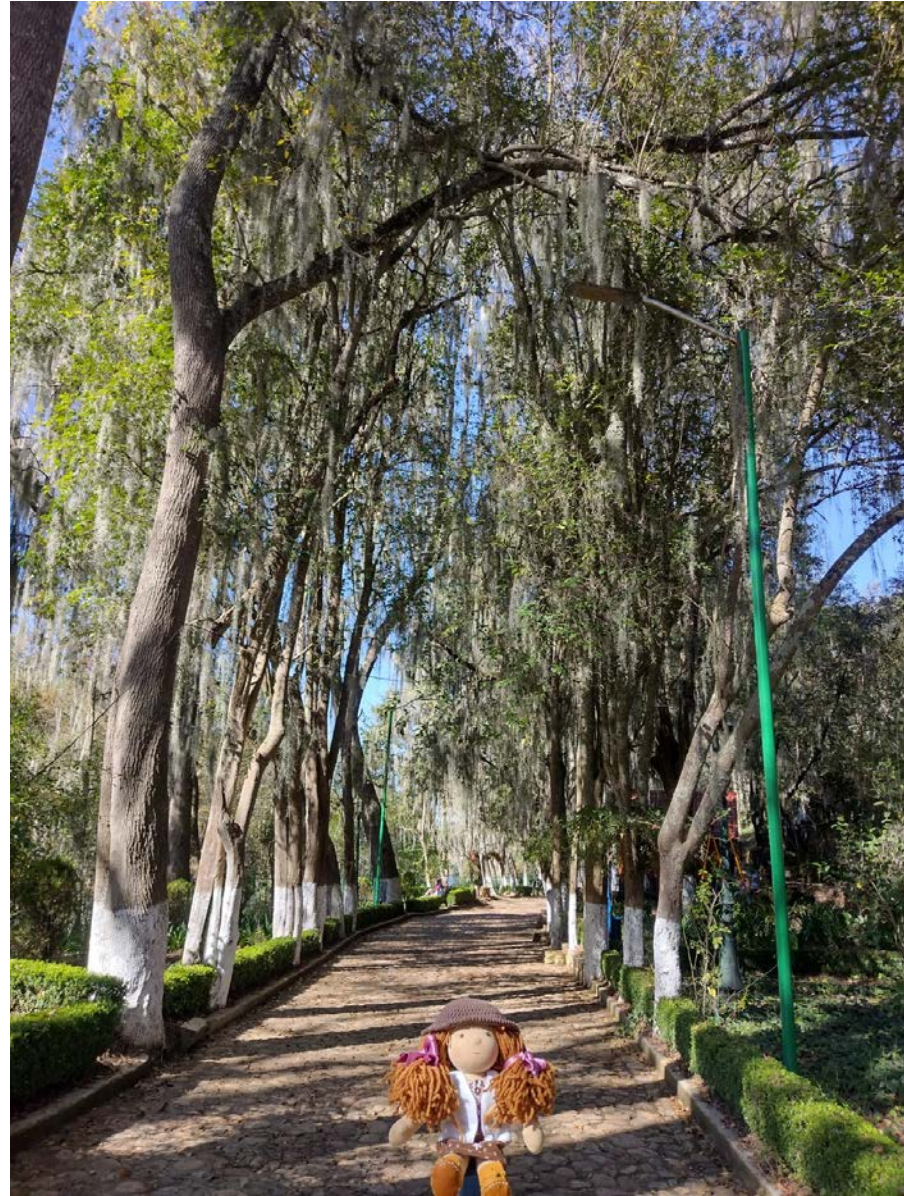
# Lúa and the geosites of Huasca

N. 8

María Ruiz



Huasca is one of the nine municipalities that make up the territory of the Comarca Minera Hidalgo Geopark, and for now it has five geosites, that is, places from where the geological wealth can be appreciated, and also have conditions to be visited.



Lúa visits geosites frequently, as she loves to enjoy their landscapes, their stories, their activities, their people and their magic.



That is why it invites you to do the same, traveling a georoute, that is, going from one geosite to another; it begins in the Bosque de las Truchas.



This geosite is a forest with a spring, dams, pools, restaurants, playgrounds, grills, a trout farm, and many other things.



You can do many activities, the one Lúa likes the most is sitting near her spring and breathing peace.



Very close is the Presa de San Antonio geosite; which was built in 1922, to bring more water to the hydroelectric plants that were already operating at the bottom of the Metztitlán canyon.



Hydroelectric plants are installations that generate light using the flow of water.  
At first, electricity was for the mines, later it was used in the towns.



For centuries, everything that happened in the region had to do with mining.



To make the dam, the embankment was built, and then the profit hacienda was flooded; that is, where metals were transformed; that's why you see a chimney in the water.



The next geosite is the Prismas Basálticos, which are basalt stone columns. To look at them, there is a huge suspension bridge, which Lúa is not afraid to cross, in fact, she would jump over it, but she doesn't because the tourists would be scared.



Basalt columns can be up to forty meters high; and they were formed, according to geologists, more than two million five hundred thousand years ago.



Lúa learned that the volcanic eruptions that occurred then were effusive, that is, lava flows that slowly come out of a crater.



The beautiful geometric shape of the basaltic prisms is due to the contact of the lava with the water, since possibly a lake existed at that time.



And they are so impressive that in 1803, a famous Prussian (German) researcher, Alexander von Humboldt, visited them, drew them, and published them in his books.



In the Prismas Basalticos geosite there are many services for tourists, such as restaurants, shops, soccer fields, children's games, and adventure sports.



It also has an interpretation center, which is like a small museum that explains the characteristics of the Comarca Minera Hidalgo Geopark, and geoparks in general.



On the way between the geosites you can see spectacular landscapes and ancestral buildings, this is called: sites of interest.



Like the former hacienda of San Juan Hueyapan, built by Pedro de Paz; a cousin of the conqueror of Mexico Tenochtitlan, Hernán Cortés; in 1550.



After the former hacienda, there is the Peña del Aire, one of the geosites that Lúa loves more, because she imagines that it's a guardian who protects nature.



When you come to visit this geosite, you can admire the Metztitlán canyon, and feel how the wind greets you, shaking your hair.



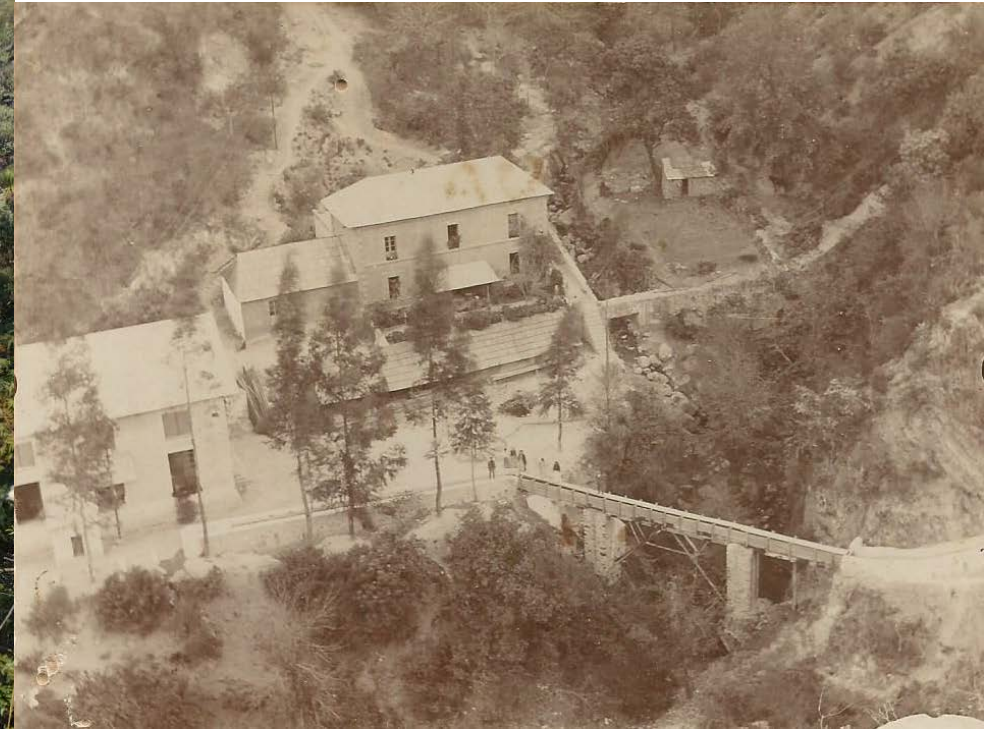
The canyon was declared a “Biosphere Reserve” to protect its ecosystem, that is, so that all living species, plants, animals and people, develop in harmony.



So the Biosphere Reserve, the Geopark, and the Peña del Aire, all want the same thing: conserve and protect.



Another very special geosite for Lúa is the Aguacatitla canyon, since her great-great-grandparents worked and lived in the Coacoyunga hydroelectric plant, which is located at the bottom.



In this geosite you can also see basaltic prisms, and in the rainy season, a waterfall.



To visit this geosite you must walk downhill, since you have to go down the canyon.



The Aguacatitla canyon is also part of the Metztitlán canyon. These names are in náhuatl, and mean, place of avocados, and place of the moon.



As you go down, you find attractive things, like a cave inhabited by bats, gardens, a rock, a restaurant, and



two swimming pools; which were previously used to control the amount of water that reached the dynamos of the hydroelectric plant, and now to carry out activities, such as rowing recreational boats.



Then you have to go up again, which is a great exercise, but Lúa, despite that, does not get tired, and already wants to visit all the geosites again.

