

COMARCA MINERA
•HIDALGO•
GEOPARQUE MUNDIAL DE LA UNESCO
GEOPARQUE INFANTIL



Lúa at the Ruiz Volcano

Visiting a Geopark candidate

María Ruiz

One morning, very early, Lúa went to the airport.



After waiting for a while, she got on a plane and put on her seat belt,



to travel to Colombia, which already looked wonderful from the air.



The plane landed in the city of Pereira, which like many cities in Colombia, has a square dedicated to Simón Bolívar.



From Pereira she traveled by car to the city of Manizales, which also has a Plaza Bolívar with the city cathedral.



As well as the square in honor of Francisco José Caldas, adjacent to the church of the Inmaculada, built of wood.



The next day, after a car ride, Lúa finally arrived at the territory of the Volcán del Ruiz geopark candidate.



The Volcán del Ruiz Geopark is a region that covers 20 municipalities. Lúa already knows that geoparks are territories, so called because they are very special in the world. They are regions rich in landscape, culture and history.



Another very important characteristic of geoparks is that they are territories that their inhabitants take care of and protect to conserve.



The Nevado del Ruiz is an active volcano that has erupted several times. The ancient settlers called it Kumanday, which means: White Mountain of the Lord of Wind and Storms.



The soil on its slopes is very fertile, which has given rise to a particular vegetation.



Volcanic deposits from different eruptions are observed on the walls of the road.



The Kumanday has seismic activity, hot springs, releases gases (fumaroles), and eruptions of columns of steam and volcanic ash. In 1985, during an eruption, the glacier at its summit melted, generating a lahar that destroyed the city of Armero.



A lahar is a large flow of water that carries soil, rocks, trees and materials that it finds in its path. Lúa observed the place where the lahar that destroyed Armero advanced.



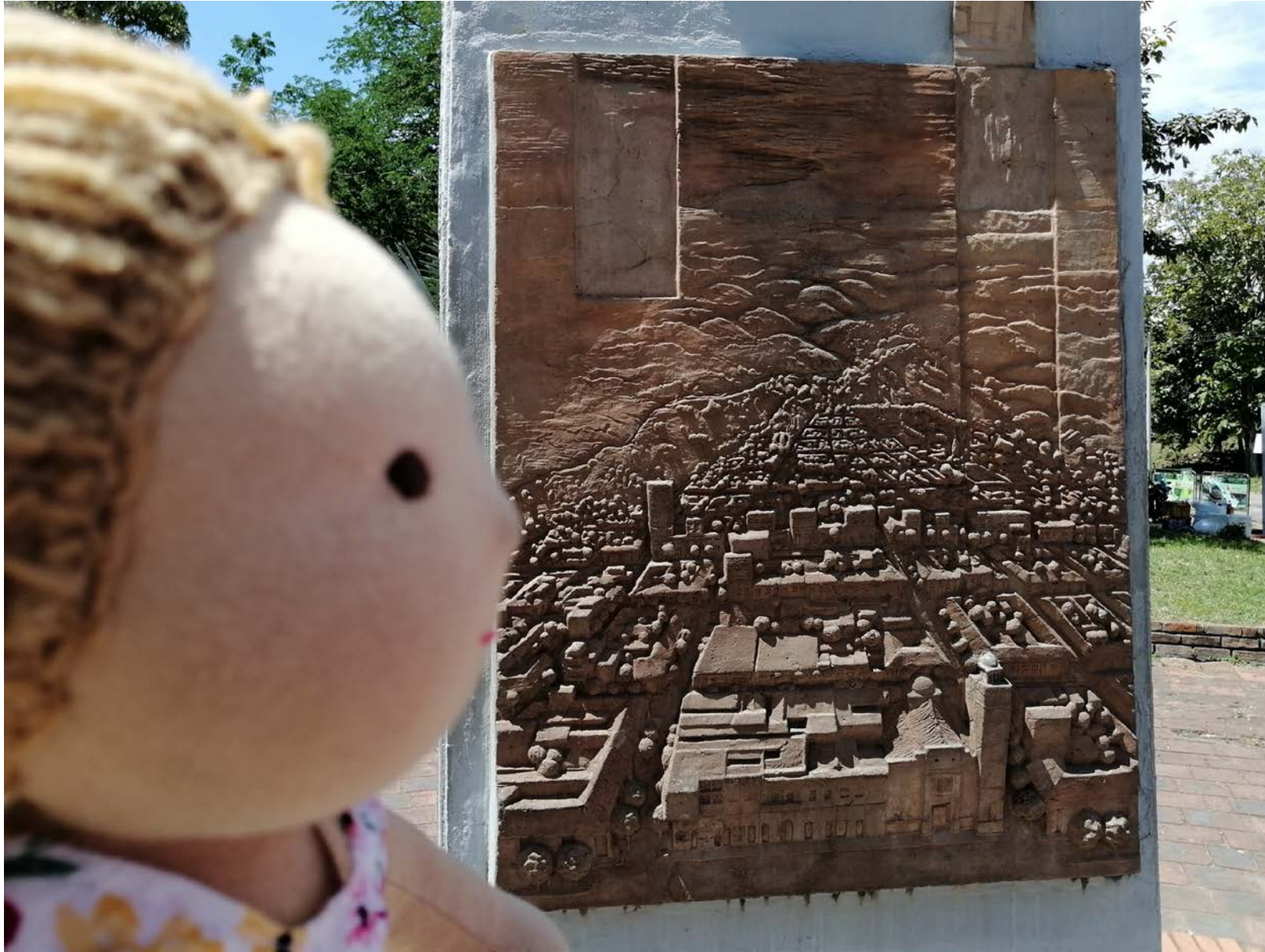
Armero was a town of 28,000 people, almost 50 kilometers from the top of the volcano; which was the path that the lahar traveled, descending between the mountains and the riverbeds, until it reached the town and destroyed it.



Most of the people who lived in Armero died, and almost all their houses were destroyed. After years, nature repopulated the region with enormous trees.



The people who survived turned Armero's remains into a memorial for their missing relatives and friends, as well as a place to disseminate: Their history, and the dangers to which the population living around a volcano is exposed.



The territory of the Volcán del Ruiz geopark is very large, but all the municipalities that make up it have one important thing in common: They are vulnerable to volcanic danger.

¿Qué es un lahar?

Es un flujo de origen volcánico compuesto por agua y fragmentos de rocas de diversos tamaños que descienden por las laderas de un volcán y luego se canalizan por las quebradas y los ríos.

Los lahares pueden viajar a una velocidad de más de 50 kilómetros por hora. Su movimiento es controlado por la gravedad, la topografía del cauce, su composición y volumen.

En valles confinados pueden alcanzar considerable altura. Cuando sobrepasan su capacidad se desbordan y cubren las planicies adyacentes.

Los lahares en el volcán Nevado del Ruiz son producto principalmente de la fusión del hielo y la nieve durante una erupción volcánica.

El 13 de noviembre de 1985 el volcán Nevado del Ruiz presentó una erupción de Índice de Explosividad Volcánica 3 (tamaño de la erupción) de estilo subpliniano que generó lahares. Este fenómeno volcánico ocasionó la destrucción del municipio de Armero (Tolima) y algunas poblaciones de los municipios de Mariquita-Honda (Tolima) y Chinchiná-Villamaría (Caldas). En este suceso 25 mil personas perdieron la vida.

PARTES DE UN LAHAR

Matriz fina
tamaños de
fragmentos
menores a 1mm

Fragmentos de rocas
de tamaños
centimétricos

Cuerpo

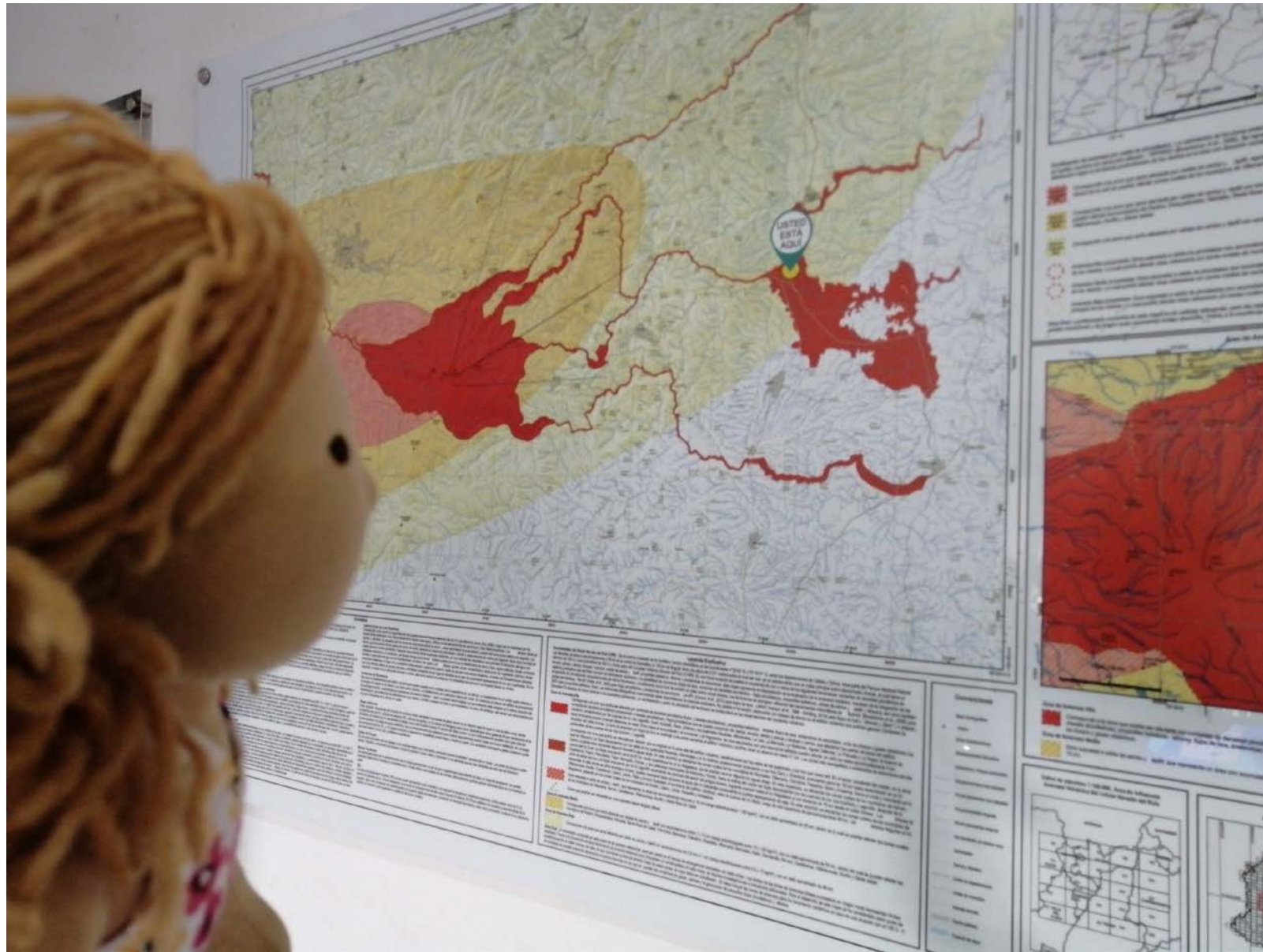
Cola

Río Chinchiná

Vulnerable means you can suffer some harm; that is why the geopark promotes alliances between institutions, so that together they promote self-protection actions and a new culture of prevention.



Self-protection means taking care of yourself, for that it is very important to be informed of the state of the volcano. The volcano is constantly observed and monitored, so you can know in advance if it will erupt.



So, although volcanoes can be dangerous, having knowledge of their activity and what to do in case of emergency can protect the inhabitants of their environment.

**TRAGEDIAS VOLCÁNICAS MÁS GRANDES DE LA HISTORIA
THE DEADLIEST VOLCANIC ERUPTIONS IN HISTORY**



1. Monte Tambora, Indonesia.
1815. (82,000 muertos)
1. Mount Tambora, Indonesia,
1815 (82.000 casualties)



2. Laki, Islandia, 1783-84.
(39.350 muertos)
2. Laki, Iceland, 1783 (39.350
casualties)



3. Krakatoa, Indonesia. 1883.
(36.417 muertos)
3. Krakatoa, Indonesia, 1883
(36.417 casualties)

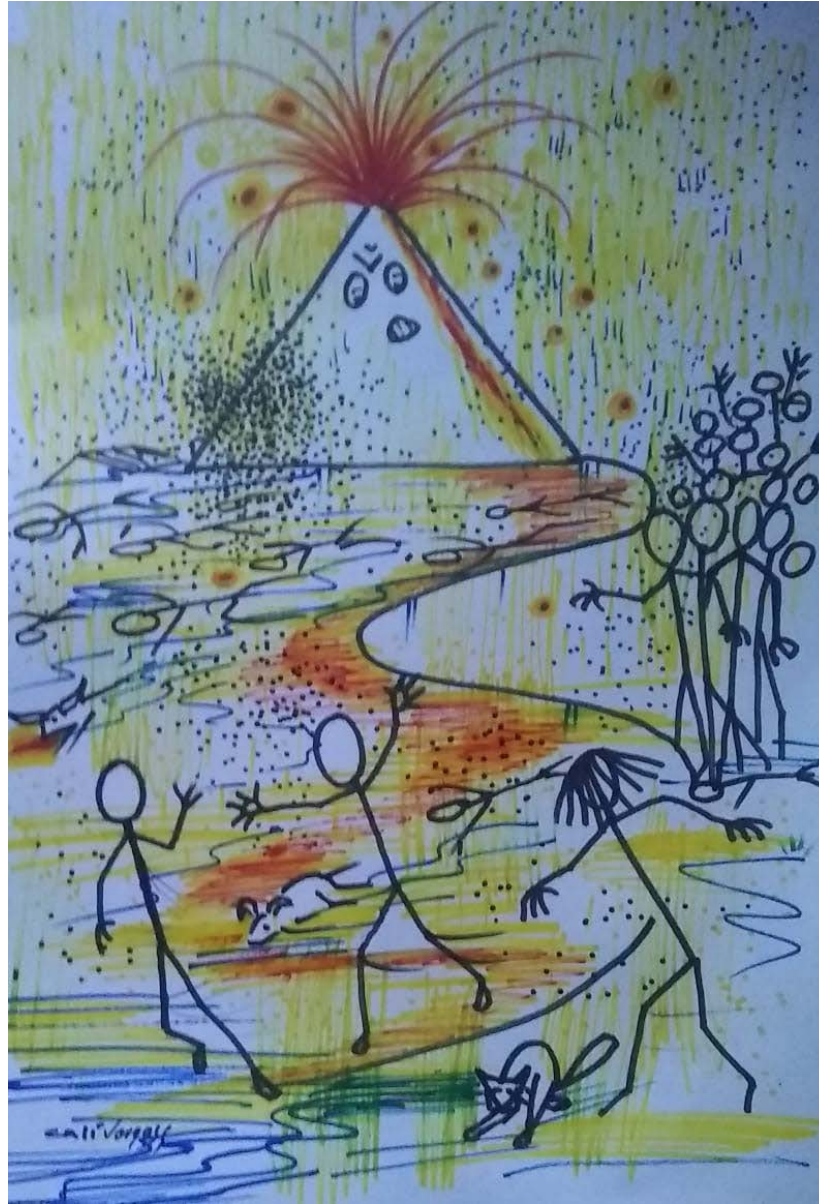


4. Mont Pelée, Martinica (Francia).
1902. (30.121 muertos)
4. Mt. Pelee, Fort de France Martinique,
1902 (30.121 casualties)



5. Nevado del Ruiz, Armero, Chinchiná,
Colombia. 1985. (25.000 muertos)
5. Nevado del Ruiz, Colombia, 1985
(25.000 casualties)

Lúa thought that we can learn from tragedies, like we have to be attentive to everything that surrounds us; to avoid being harmed, or that, we can transform pain into art; as in this work by Carlos Alonso Vargas, about Armero's misfortune.



Another town in the Volcán del Ruiz geopark is called Murillo. Many people there are farmers and are dedicated to growing coffee.



The traditional architecture of the houses in Murillo is known as the standing table.



The Volcán del Ruiz geopark is made up of municipalities from 4 departments or states, such as Honda, from the department of Tolima.



Honda is a town rich in culture and history, where Lúa felt very warm.



In Honda there are two rivers, the Gaulí and the Magdalena, which is why there are several bridges in the town.



The Magdalena River is large and mighty. During the Spanish colonial era, huge ships sailed through it, so Honda was an important port.



The ease of transportation along the river made many people go to live in Honda, and build beautiful houses; like this one, called House of the Conquerors, which is more than 450 years old.



They also had a huge convent built with 108 columns, which is now the market square.



The streets are mostly cobblestone, and the style of its construction is called: Colonial.



Honda is full of beautiful buildings, such as the church of Nuestra Señora del Carmen; its location and beauty make it a good meeting place for some of the towns in the geopark.



Geoparks favor relationships between institutions and residents, for many reasons, such as: Providing education about caring for the earth, and self-protection from phenomena associated with Climate Change.



They also promote ecological tourism, that is, people go on vacation to places responsibly, so that they do not destroy the territories they visit.



And they help artisans, who make environmentally friendly products, to sell them to geopark tourists.



To go to the last geosite she visited, Lúa boarded a cable car; which is a means of transportation that takes you from one place to another, in cabins suspended in the air by a cable.



Lúa sat down, looking towards her next destination, which was Villamaria, in the department of Caldas.



Many birds live in Villamaria and the geopark invites people to observe them; that is, bird watching; this is geotourism.



Among its cultural and historical wealth, there is the church of Nuestra Señora del Rosario and the sculpture dedicated to women.



Throughout the trip, Lúa noticed that the people of Colombia were very kind to dogs, she liked that, and also that there was one in the monument dedicated to the muleteers.



Lúa really enjoyed her visit to the Volcán del Ruiz Geopark in Colombia, but what she liked most was making new friends; a piece of her heart stayed there.



Lúa learned a lot on this trip, including that things don't always go the way you want, and you have to adapt.

